

How the Tech. Works?

CONTINUED...

In addition to plant material, the Earth Heart Technology© contains minerals and crystals known to shield living beings from EMF.

This is a complete shift in our understanding of EMF and radiation protection. While other companies try to block or disrupt the waves, Divine Balance Jewelry has looked to nature for the answers. Using the plant frequencies and adding mineral frequencies, they've been able to change the wave pattern or frequency of these EMF's and actually use the EMF's to make the body healthier.

This information has not been evaluated by the FDA and is not intended to treat, diagnose or cure disease.

What People are saying about DB's Jewlerey

"My necklace is by far the MOST BEAUTIFUL Emf protection technology I've ever bought! And it's so convient, I just wear it and am protected wherever I go. I want to buy it all!"

-Marlene from Ohio

"I love my ring! It's affordable considering how much care has gone into making it! Gorgeous!"

Lauren from Arizona



Customer Reviews

CONTINUED...

"This jewelry, especially with EMF tech., is priced very fairly. As these rings are gold-plated and not solid plated, they do wear off after

"I get complimented all the time! I've never seen such unique Jewlery like this before"
-J.C. from Texas

awhile, but I prefer the lower prices of gold-plated than paying \$\$\$ for a solid gold rings. The necklaces last forever! Been wearing mine for 4 months straight and it looks good as new! I'm sensative to emfs and I feel much more relaxed about using my phone and computer when I'm wearing the jewlery. I feel more at peace."

-Michele from Ohio



*Beautiful
Affordable
EMF Protection
wherever you go!*



Divine Balance Jewelry Co.

Made with love in the U.S. at:
6902 U.S. Hwy. 127 Bryan, OH 43506

For questions or orders, email:
DivineBalanceJewelry@gmail.com



Divine Balance Jewelry Co.



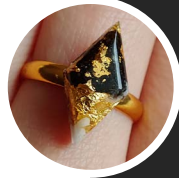
About

DIVINE BALANCE JEWELRY

- * **Protects the body from Electromagnetic Radiation Frequencies (EMF)** from cell phones, tv's computers, 5G, etc.
- * **Hand Made Locally** in Bryan, Ohio in small batches with attention to detail
- * **Unique & Beautiful** - Each piece is slightly different because it's handmade.
- * **Affordable** - extreme effort is made to achieve the highest quality for cheaper prices than other companies.
- * **Customizable options** upon request

DB's Jewlery

EXAMPLES FROM OUR CATALOG



YOU SHINE LIKE A DIAMOND

Diamond-shaped EMF tech containing 24k gold flakes sits on a gold-plated adjustable ring band. Many different shapes are available.



A SUNFLOWER 4 U

This Sunflower pendant brings a smile to the wearer.



I HEART EMF PROTECTION

This heart pendant necklace can come with real or faux gold flakes.



SILVER/GOLD EMF PENDANTS

We offer different shaped EMF pendants with marbled black/white/gold designs.

How the Tech. Works?

EARTH HEART TECHNOLOGY©

Unlike other EMF products that try to block EMFs, our Earth Heart technology© imbedded in the jewelry uses plants/minerals/crystals to transmute the toxic wave form (EMFS and ELFS) that comes from many electronics and transmutes it into a non-toxic, more healthy wave form before it can harm the body's electromagnetic field.

The technology is made from specific plants that have the greatest ability of transmuting toxic wave forms. These are specially chosen plants that grow under power lines/transformers and thrive in these toxic environments. When these certain plants come in contact with radiation, emf's and elf's (electromagnetic low frequencies), they actually change the wave or the toxic frequency to a pattern that is not harmful to them. Humans do not have the ability to do this.

Research has shown that people and animals that live under high power lines have a cancer rate that is 80% higher than the rest of the population. This type of radiation disrupts cellular communication in the body of humans and animals, but in certain plants this isn't the case. Plants can change these toxic wave forms into a non-toxic form so they are not affected by it.

